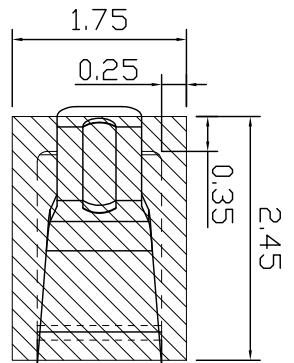
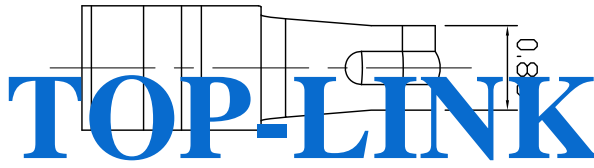
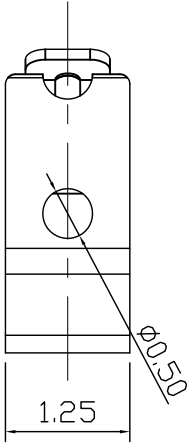
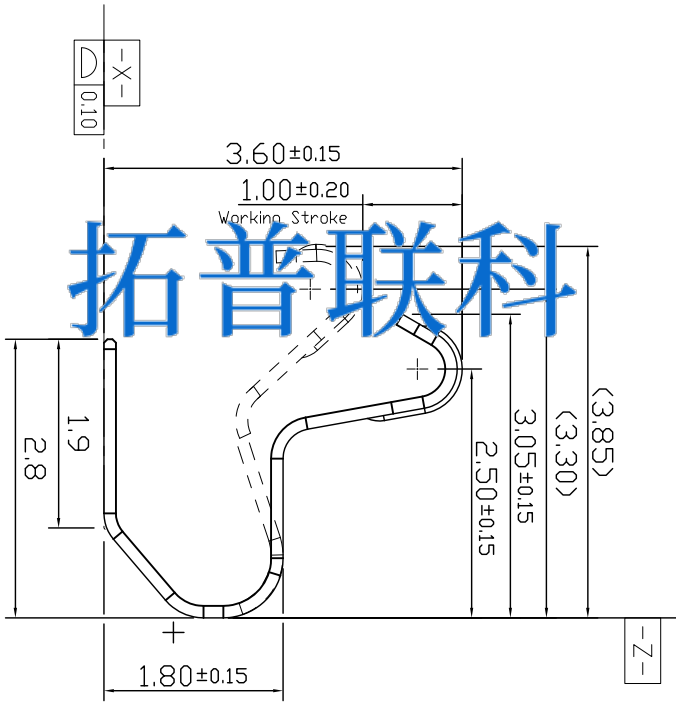
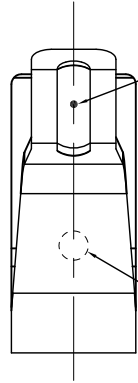
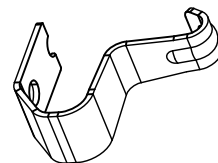


POINT OF MEASUREMENT  
PICK&PLACE AREA



PAD OF PCB.



LDC	-
DIST	-

LTR	REVISION	APVD	DATE
	RECORD		

200055-1	2	CARRIER TAPE	P=8mm	WHITEN=16mm,QTY/REEL=2000 Pcs
1	3.6H 1.25W ANTENNA CLIPS	1Pcs		NOTES 1,2
DIMENSIONS IN MM TOLERANCES UNLESS OTHER SPECIFIED				
0	= ±			
0.0	= ±0.15			
0.00	= ±0.10			
ANGLE: = ±3°				
0	= ±1.5°			
0.0	= ±1.5°			
REMOVE BURRS, BREAK SHARP EDGES R0.10 MAX DD NOT SCALE PRINT				

MATL	1	HT TR	FIN
DWN	Kent	APVD	
CHK	REL		
NAME			
CUSTOMER DRAWING FOR 3.6H, 1.25W, ANTENNA CLIPS			
SCALE	A4	DWG NO.	C-200055
1:1			
SHEET 1 OF 1		REV A	

- NOTES:
- MATERIAL: COPPER ALLOY, THICKNESS=0.12.
  - PLATING: 1.25um(50u"Min Ni UNDER PLATING, 0.025um(1u"Min Au PLATING OVER ALL.
  - SPECIFICATION:
    - ELECTRICAL CHARACTERISTICS: CURRENT RATING : 10A, VOLTAGE RATING : 50 VAC/DC, LDW LEVEL CONTACT RESISTANCE:50mΩ MAX
    - MECHANICAL CHARACTERISTICS: CONTACT NORMAL FORCE: 30gf Min PER PIN AT WORKING STROKE DURABILITY : MATED 10,000 CYCLES AT WORKING STROKE WITHOUT DEGRADING
    - ENVIRONMENTAL CHARACTERISTICS: OPERATING TEMPERATURE RANGE : -20°C TO +70°C.
    - TAPE & REEL PACKAGING PER EIA481 STANDARD.
    - DIMENSION SHALL BE INTERPRETED PER ASME Y14.5M-2009.
    - HARMFUL MATERIAL CONTROL FOLLOW "ROHS"

4 3 2 1

USED ON

Top-Link Electronics Ltd.